

LEATHER

Aniline leather

NATURAL

Natural is a 'naked' aniline leather of the highest quality. It is undyed and will change colour and gain plenty of patina and character over time. Subdued natural markings are to be expected. Vegetable tanned (Cr6+ free process).

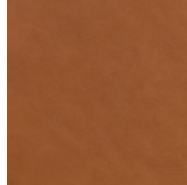
Natural



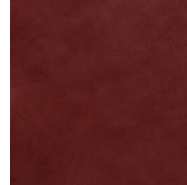
ELEGANCE

Elegance is an aniline leather at the top of the range of deluxe, high-end leathers. Subdued natural markings are to be expected. Tanned with chrome followed by a vegetable tanning process to enhance the firmness (Cr6+ free process). Water-based aniline dye.

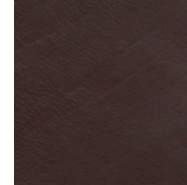
El. | Whiskey



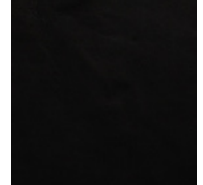
El. | Burgundy



El. | Dark Brown



El. | Black



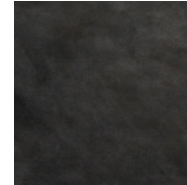
MATSTONE

Matstone is an aniline leather with subtle, natural markings with an almost velvety expression. Matstone boasts a matte raw look with a touch of understated elegance and softness. Synthetic, chrome-free tanning process. Water-based aniline dye.

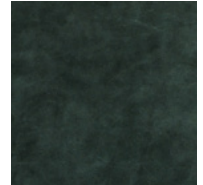
Ma. | Sand*



Ma. | Dark Grey*



Ma. | Racing Green



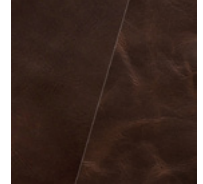
YELLOWSTONE

Yellowstone is an aniline leather. It has incomparable depth and a naturally-worn look due to a pull-up effect. It's robust with visible natural markings and a slightly worn look. Tanned with chrome followed by a vegetable tanning process to enhance the firmness (Cr6+ free process). Water-based aniline dye.

Ye. | Whiskey



Ye. | Dark Brown



NOTE: By choosing Yellowstone you accept a very lively type of leather that varies in structure and type of natural markings from hide to hide.

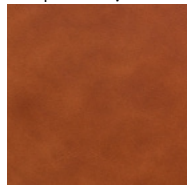
**For the Wire Collection, the colours Matstone 'Sand' and 'Dark Grey' are only available in the Two Tone combination Sand/Black and Dark Grey/Black, with a black tooling leather on the back side of the chair (description p. 4).*

Protected aniline leather

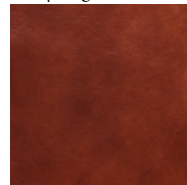
HORIZON

Horizon is a protected aniline leather with a special surface treatment that protects it from stains and fading. It is protected but developed to have the look and feel of aniline leather with discrete natural markings. Tanned with chrome (Cr6+ free process). Water-based aniline dye.

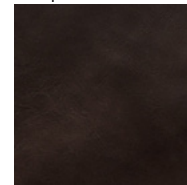
Ho. | Whiskey



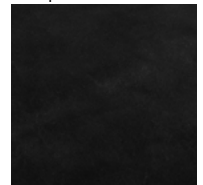
Ho. | Cognac Red



Ho. | Dark Brown



Ho. | Black



LEATHER AVAILABILITY ON PRODUCTS

Circle Collection: Natural | Elegance | Matstone | Yellowstone | Horizon

Wire Collection: Elegance | Matstone | Yellowstone | Horizon