



Stay, 909/D
divano \ sofa

Stay, sia in versione poltrona che divanetto, è una seduta dai richiami anni '50, con una struttura essenziale in tubolare di metallo. Il rigore del disegno è bilanciato dal profilo morbido dello schienale e della seduta, elementi che sembrano galleggiare liberamente all'interno della struttura, svincolati tra loro sia funzionalmente che visivamente.

Stay, in both the armchair and sofa versions, is a seat with references to the 1950s, with an essential tubular metal structure. The rigor of the design is balanced by the soft profile of the backrest and seat, elements that seem to float freely within the structure, disconnected from each other both functionally and visually.

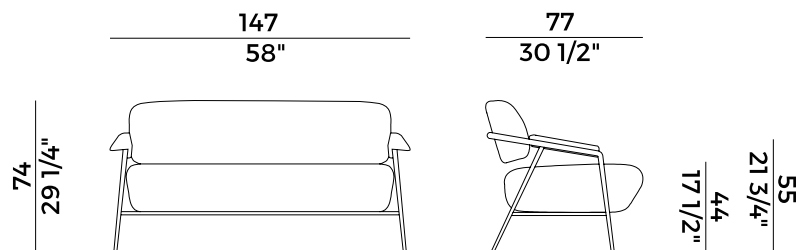
Informazioni tecniche \ *Technical information*

Descrizione tecnica \ *Technical description*

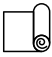
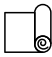


Divano con seduta e schienale imbottiti in poliuretano espanso ignifugo. Struttura in tubolare di metallo verniciato antracite goffrato o ottone brunito. Finiture e rivestimenti di collezione.


Sofa with seat and backrest padded in fire retardant polyurethane foam. Structure in metal rod, in bronzed brass or anthracite embossed painted metal finishes. Finishes and coverings as per collection.

Dimensioni \ *Dimensions*



Consumi stoffe \ *Fabric and leather requirements*

FABRIC / LEATHER REQUIREMENTS		FABRIC / LEATHER REQUIREMENTS	
	x1	x2	
 H 140	ml 3,00	ml 6,00	 H 140
 LEATHER	m ² 8,00		 LEATHER
			yd 3,30 yd 6,60
			ft ² 86,15

PACKAGING	
	1 × box = m ³ 1.08
	gross weight - Kg 40

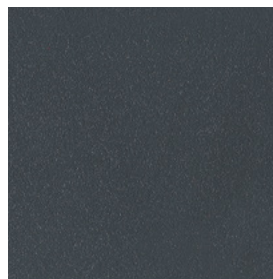
Finiture \ *Finishes*

Finiture struttura \ *Frame finishes*

Metallo \ *Metal*



Ottone Brunito\
Bronzed Brass



Antracite Goffrato\
Antrachite Embossed

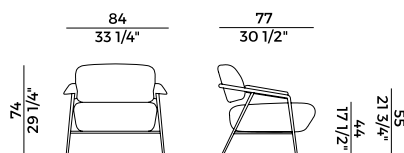
Rivestimenti \ *Coverings*

Tessuto, finta pelle, pelle \ *Fabric, faux leather, leather*

Collezione Stay \
Stay collection

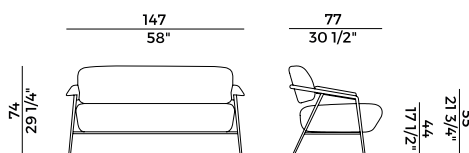
Poltrona e divano con seduta e schienale imbottiti in poliuretano espanso ignifugo. Struttura in tubolare di metallo verniciato antracite gofrato o ottone brunito. Finiture e rivestimenti di collezione.

Armchair and sofa with seat and backrest padded in fire retardant polyurethane foam. Structure in metal rod, in bronzed brass or anthracite embossed painted metal finishes. Finishes and coverings as per collection.



909/PL

poltrona \ armchair



909/D

divano \ sofa